

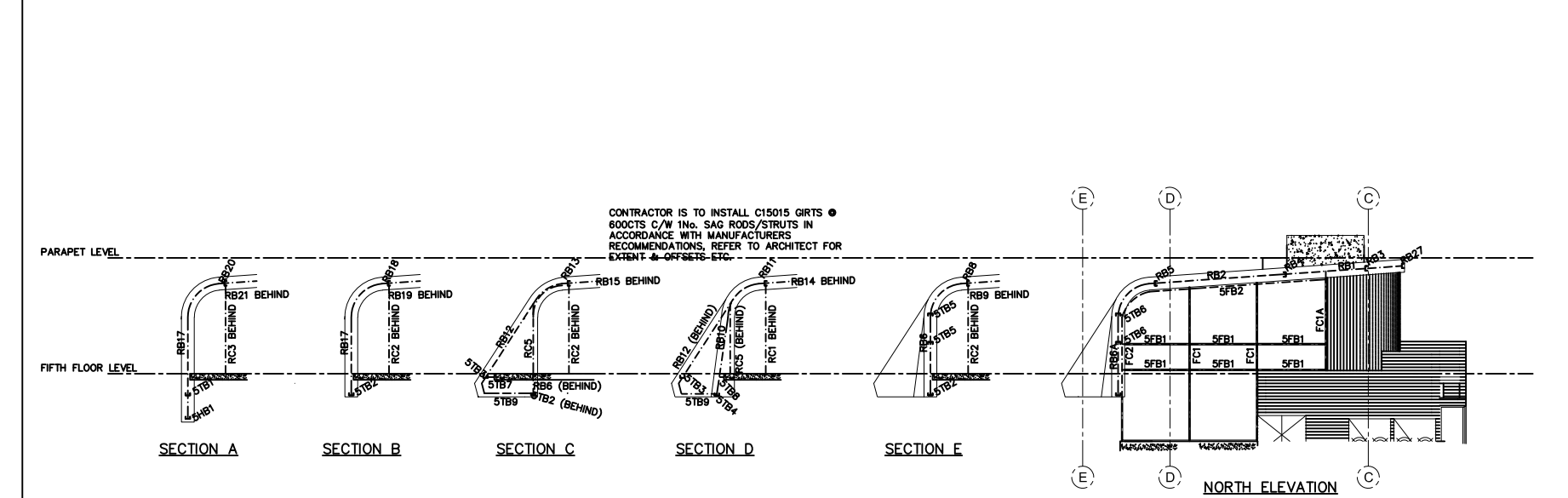
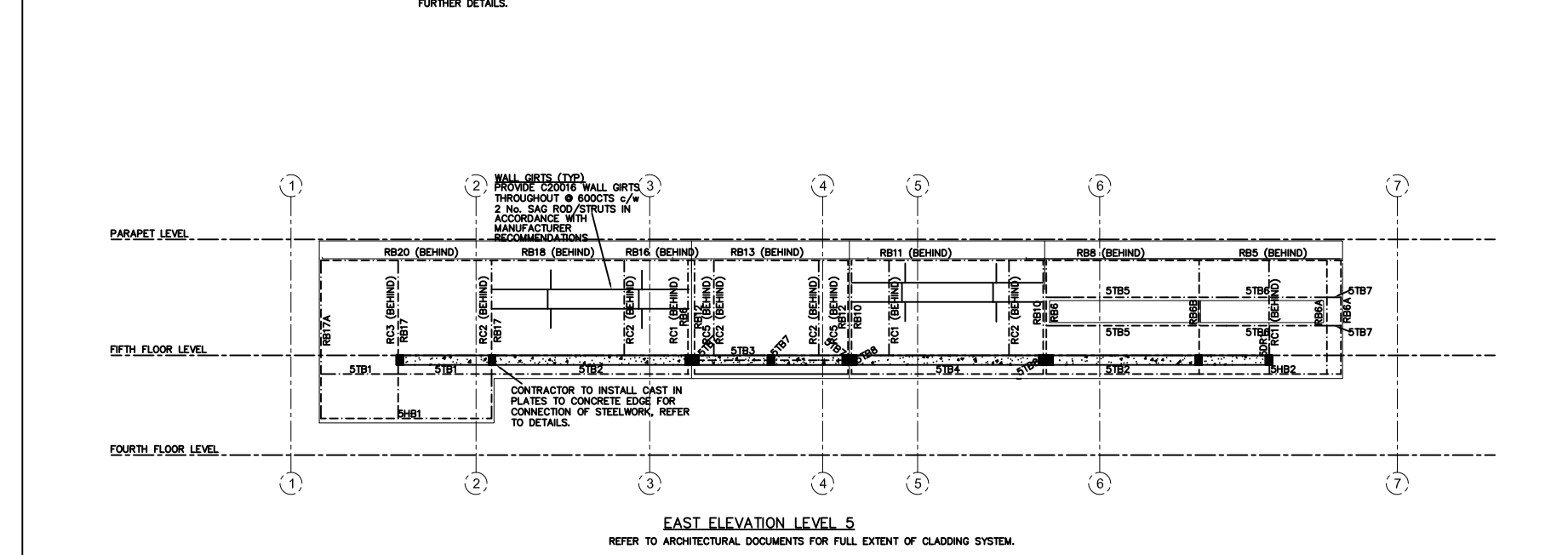
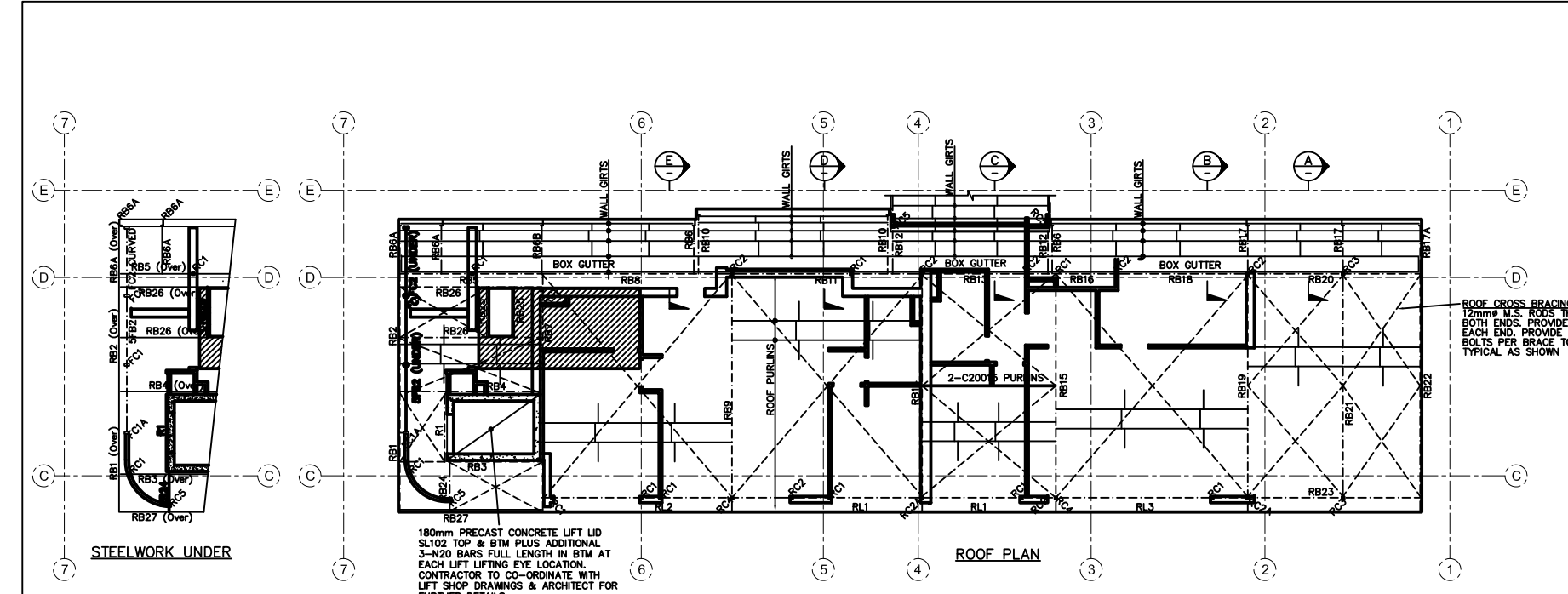
| REVISIONS: |      |             |       |
|------------|------|-------------|-------|
| No.        | DATE | DESCRIPTION | APP'D |
|            |      |             |       |
|            |      |             |       |
|            |      |             |       |
|            |      |             |       |
|            |      |             |       |
|            |      |             |       |
|            |      |             |       |
|            |      |             |       |

| MEMBER SCHEDULE  |   |  |
|------------------|---|--|
| MEMBER           | SIZE  | REMARKS  |
| RB1              | 150x75 PFC STEEL SECTION  | CONTINUOUS OVER SUPPORTS   |
| RB2              | 200x75 PFC STEEL SECTION  |  |
| RB3              | 150x75 PFC STEEL SECTION  | CONTINUOUS OVER SUPPORTS   |
| RB4              | 150x75 PFC STEEL SECTION  | CONTINUOUS OVER SUPPORTS   |
| RB5              | 200x75 PFC STEEL SECTION  | CONTINUOUS OVER SUPPORTS   |
| RB6              | 150x75 PFC STEEL SECTION c/w 100x4.9mm SHS STEEL STUB TIE TO LEVEL  | REFER DETAILS  |
| RB6A             | 200x75 PFC STEEL SECTION  | REFER DETAILS  |
| RB6B             | 200x75 PFC STEEL SECTION c/w 100x4.9mm SHS STEEL STUB TIE TO LEVEL  | REFER DETAILS  |
| RB7              | 200x75 PFC STEEL SECTION  | CONTINUOUS OVER SUPPORTS   |
| RB8              | 200x75 PFC STEEL SECTION  |  |
| RB9              | 250x83 STEEL SECTION c/w 10mm PRECAMBER   | CONTINUOUS OVER SUPPORTS   |
| RB10             | 150x75 PFC STEEL SECTION  | CURVED TO SUIT   |
| RB11             | 200x75 PFC STEEL SECTION  | CONTINUOUS OVER SUPPORTS   |
| RB12             | 200x75 PFC STEEL SECTION  | CURVED TO SUIT   |
| RB13             | 200x75 PFC STEEL SECTION  | REFER DETAILS  |
| RB14             | 200x83 STEEL SECTION c/w 10mm PRECAMBER   | CONTINUOUS OVER SUPPORTS   |
| RB15             | 200x83 STEEL SECTION c/w 10mm PRECAMBER   | CONTINUOUS OVER SUPPORTS   |
| RB16             | 200x75 PFC STEEL SECTION  |  |
| RB17             | 200x75 PFC STEEL SECTION c/w 100x4.9mm SHS STEEL STUB TIE TO LEVEL  | CURVED TO SUIT   |
| RB17A            | 200x75 PFC STEEL SECTION  | REFER DETAILS  |
| RB18             | 200x75 PFC STEEL SECTION  |  |
| RB19             | 200x83 STEEL SECTION c/w 10mm PRECAMBER   | CONTINUOUS OVER SUPPORTS   |
| RB20             | 200x75 PFC STEEL SECTION  | CONTINUOUS OVER SUPPORTS   |
| RB21             | 200x83 STEEL SECTION  |  |
| RB22             | 200x75 PFC STEEL SECTION  | CONTINUOUS OVER SUPPORTS   |
| RB23             | 200x75 PFC STEEL SECTION  | CONTINUOUS OVER SUPPORTS   |
| RB24             | 150x75 PFC STEEL SECTION  | CONTINUOUS OVER SUPPORTS   |
| RB25 & 27        | 150x75 PFC STEEL SECTION  |  |
| RB26             | 200x75 PFC STEEL SECTION  |  |
| 5TB9             | 150x75 PFC STEEL SECTION  | c/w OFFSET CLEAT FROM RB6 & RB10   |
| 5DR1             | 200x75 PFC STEEL SECTION c/w 100x4.9mm SHS STEEL STUB TIE TO SUIT   | REFER DETAILS  |
| 5HB1             | 200x75 PFC STEEL SECTION  | CONTINUOUS OVER SUPPORT  |
| 5HB2             | 200x75 PFC STEEL SECTION  | CONTINUOUS OVER SUPPORT  |
| 5TB1             | 150x75 PFC STEEL SECTION  | REFER DETAILS  |
| 5TB2             | 150x75 PFC STEEL SECTION  | REFER DETAILS  |
| 5TB3             | 150x75 PFC STEEL SECTION  | REFER DETAILS  |
| 5TB4             | 150x75 PFC STEEL SECTION  | REFER DETAILS  |
| 5TB5             | 150x75 PFC STEEL SECTION  | REFER DETAILS  |
| 5TB6             | 150x75 PFC STEEL SECTION  | REFER DETAILS  |
| 5TB7             | 150x75 PFC STEEL SECTION  | REFER DETAILS  |
| 5TB8             | 150x75 PFC STEEL SECTION  | REFER DETAILS  |
| 5RB1             | 89x4.9mm SHS STEEL SECTION  | CONTINUOUS OVER SUPPORT. REFER DETAILS   |
| 5RB2             | 89x4.9mm SHS STEEL SECTION  | REFER DETAILS  |
| 5RB3             | 100x4.9mm SHS STEEL SECTION   | REFER DETAILS  |
| RL1              | 150x75 PFC STEEL SECTION  |  |
| RL2              | 230x75 PFC STEEL SECTION  |  |
| RL3              | 200x75 PFC STEEL SECTION  |  |
| RC1              | 89x4.9mm SHS STEEL SECTION  |  |
| RC2              | 89x4.9mm SHS STEEL SECTION  |  |
| RC2A             | 89x4.9mm SHS STEEL SECTION  | SUITABLY PROTECTED TO SUIT EXPOSURE CONDITIONS                                     |
| RC3              | 89x4.9mm SHS STEEL SECTION  |  |
| RC4              | 89x4.9mm SHS STEEL SECTION  |  |
| RC5              | 89x4.9mm SHS STEEL SECTION  | REFER DETAILS  |
| SC1              | 89x4.9mm SHS STEEL SECTION  | REFER DETAILS  |
| RT               | 76x76x5.0mm STEEL EQUAL ANGLE SECTION   | REFER DETAILS  |
| SFB1             | 150x75x5mm RHS STEEL SECTION  | REFER DETAILS  |
| SFB2             | 150x75x5mm RHS STEEL SECTION  | REFER DETAILS  |
| FC1              | 150x75x5mm RHS STEEL SECTION  | REFER DETAILS  |
| FC1A             | 150x75x5mm RHS STEEL SECTION  | COLUMN TO EXTEND TO RB1  |
| FC2              | 150x75x5mm RHS STEEL SECTION  | REFER DETAILS  |
| PURLINS GENERAL  | C20015 @ 600mm MAX. CTS c/w 6.0m MAX SPAN FOR GENERAL ROOF AREAS (NON TRAFFICABLE)  | c/w 2 ROWS OF BRIDGING. REFER TO MANUFACTURERS MANUAL FOR FURTHER RECOMMENDATIONS. |
| PURLINS PLATFORM | C25025 @ 600mm MAX. CTS c/w 6.0m MAX SPAN FOR ALL PURLINS UNDER PLATFORM TRAFFICABLE AREA REFER TO ARCHITECT FOR LOCATION | c/w 2 ROWS OF BRIDGING. REFER TO MANUFACTURERS MANUAL FOR FURTHER RECOMMENDATIONS. |
| GIRTS            | C20015 @ 600mm MAX. CTS c/w 6.0m MAX SPAN   | c/w 2 ROWS OF SAG RODS & STRUTS REFER TO MANUFACTURERS MANUAL FOR RECOMMENDATIONS. |

LEGEND

TRAFFICABLE ROOF AREA. REFER TO ARCHITECT FOR FULL EXTENT  
 FULL HEIGHT COLUMN UNDER  
 STUB COLUMN UNDER

REFER TO NOTES AND DETAILS FOR FURTHER REQUIREMENTS



ARCHITECT

CLIENT

PROJECT

**PROPOSED APARTMENTS**

DRAWING  
**ROOF PLAN & UPPER STEEL ELEVATIONS**

|                |                           |
|----------------|---------------------------|
| DESIGNED: R.R. | DATE:                     |
| DRAWN: R.R.    | SCALE: 1 : 100            |
| CHECKED: D.T.  | PLOT SCALE: 1 : 100 on A1 |
| APPROVED:      | DRAWING No. REV           |

A